



FARMOSA 古城假期旅遊(新)有限公司
HOLIDAY TOUR (S) PTE LTD TA.426

101 UPPER CROSS STREET, #B1-19/20 PEOPLE'S PARK CENTRE, S'PORE 058357.

TOUR TEL: (65) 6534 1133 FAX: (65) 65342888 TICKETING TEL: (65) 65341234 FAX: (65) 65343786

E-mail: sales@farmosa.com.sg Co. Regn. No. 198202509H

6D4N I ♥ GOLD COAST



Validity : 01 AUG 2019 - 31 MAR 2020



DAY 01: SINGAPORE – Gold Coast Airport
Assemble at Changi Airport for your flight to Brisbane.



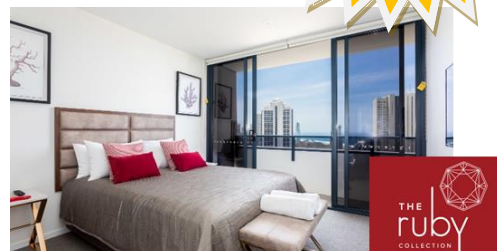
FREE
Helicopter Ride
@ Sea World

Natas Promo
FREE
Hard Rock Cafe Dinner

DAY 02: FREE & EASY

Upon arrival, arrival transfer to hotel for check in.
Free at own leisure thereafter.

Promoted on KISS 92 FM
'The Perfect Gold Coast
Family Holiday'



DAY 03: FULL DAY SEAWORLD



(BREAKFAST)



DAY 04: FULL DAY MOVIEWORLD



(BREAKFAST)



DAY 05: PARADISE COUNTRY FARM TOUR + FREE TRANSFER TO HARBOUR TOWN FACTORY OUTLET
(BREAKFAST/BBQ LUNCH)

(Note: Free transfer to Harbour Town must be on the same day after Paradise Country Farm Tour)



DAY 06: Gold Coast Airport – SINGAPORE

Enjoy exploring the city before transferring to Brisbane airport at designated time.

If Flight in / out @ BRISBANE AIRPORT:

ADD: + \$40 per Adult / + \$20 per Child

PACKAGE INCLUDES:

- ✓ Return Airfare SIN/OOL/SIN By SCOOT
- ✓ Return Airport/Hotel/Airport Transfer by SIC / 5D Car Rental (Toyota Corolla Sedan) pick up at the airport (minimum 4 pax)
- ✓ 04 Nights Stay @ Gold Coast Surfers Paradise with Breakfast
- ✓ Movie World/ Sea World + 5 Min Sea World Helicopter/ Paradise Country Farm Tour + BBQ Lunch & Free Transfer to Harbour Town Factory outlet (with SIC transfer / self-drive to the park)

BONUS: FREE Hard Rock Café Dinner (Gold Menu)



FARMOSA 古城假期旅遊(新)有限公司
HOLIDAY TOUR (S) PTE LTD TA.426

101 UPPER CROSS STREET, #B1-19/20 PEOPLE'S PARK CENTRE, S'PORE 058357.

TOUR TEL: (65) 6534 1133 FAX: (65) 65342888 TICKETING TEL: (65) 65341234 FAX: (65) 65343786

E-mail: sales@farmosa.com.sg Co. Regn. No. 198202509H

6D4N I LOVE GOLD COAST (LAND TOUR)

Validity : 01 AUG 2019 - 31 MAR 2020

**Natas Promo
FREE
Hard Rock Cafe Dinner**

CODE : PTAOOL-4NTSM	TRP	TWN	SGL	CHT	CWB	CNB
MANTRA LEGENDS HOTEL (STD) 4* (3A/3A1C) Surcharge (MIN 2N): 27Sep - 06Oct; 05-30Jan: + \$30 pr/pn Surcharge (MIN 3N): 21Dec - 04Jan: + \$120 pr/pn MANTRA ON VIEW HOTEL (STD) 4* (3A/3A1C) Surcharge (MIN 2N): 27Sep - 06Oct; 25-26Oct; 05-30Jan: + \$55 pr/pn Surcharge (MIN 3N): 21Dec - 04Jan: + \$120 pr/pn	578	598	898	548	518	358
NOVOTEL SURFERS PARADISE (SUP) 4* (3A/3A1C) Surcharge: 21-30Sep: + \$10 pr/pn Surcharge (MIN 2N): 25-27Oct: + \$60 pr/pn Surcharge (MIN 3N): 21Dec - 06Jan: + \$155 pr/pn THE ISLAND GOLD COAST (CLASSIC) 4* (3A/2A2C) Hotel Block Out: 25-27Oct; 24-26Jan Surcharge: 22Dec - 05Feb: + \$70 pr/pn	608	618	928	588	568	348
VIBE HOTEL GOLD COAST (GUEST) 4* (3A/2A1C) Surcharge (MIN 2N): 25-27Oct: + \$110 pr/pn Surcharge (MIN 3N): 26-30Dec; 02-12Jan: + \$110 pr/pn Surcharge: 31Dec - 01Jan: + \$210 pr/pn	01/08 - 30/09 608	618	928	588	568	348
	01/10 - 03/03 628	648	988	618	568	348
THE RUBY COLLECTION (New 4* Hotel /APT) (Book By 09 Aug 19) Block out: 21/09-13/10; 21/12-27/01/20	(1 BEDROOM) 2A1C/2A - (2 BEDROOM) 4A/4A1C QUAD 598	658	-	658	438	-
VOCO HOTEL (SUPERIOR) 4* (3A/2A1C) formerly known as Watermark Hotel Surcharge (MIN 2N): 25-27Oct: + \$90 pr/pn Surcharge (MIN 3N): 25Dec-04Jan: + \$110 pr/pn CNY 2020: Surcharge TBA	618	628	948	598	538	358
QT GOLD COAST (MT RIVER VIEW) 5* (3A/2A2C) Surcharge: 25-27Oct: + \$85 pr/pn Surcharge (MIN 2N): 21-30Dec; 01-19Jan: + \$85 pr/pn Surcharge (MIN 2N): 31Dec: + \$185 pr/pn	658	688	1058	648	608	358
HILTON SURFERS PARADISE (GUEST) 5* (3A/2A2C) Block out: 25-27 Oct Surcharge: Every SAT +\$90 pr/pn Date: 16Dec-14Jan: Rate on request	688	728	1138	688	588	398

PACKAGE INCLUDES: (Updated: 24/07/19)

- ✓ Return OOL Airport/Hotel/OOL Airport Transfer by SIC / 5D Car Rental (Toyota Corolla Sedan) pick up at the airport (minimum 4 pax)
- ✓ 04 Nights Stay @ Gold Coast Surfers Paradise with Breakfast
- ✓ Movie World/ Sea World + 5 Min Sea World Helicopter/ Paradise Country Farm Tour + BBQ Lunch & Free Transfer to Harbour Town Factory outlet (with SIC transfer / self-drive to the park)
- BONUS: FREE Hard Rock Café Dinner (Gold Menu)

PACKAGE EXCLUDES:

- ✓ Return AIRFARE & AIRPORT TAXES (refer GDS)

If Flight in / out @ BRISBANE AIRPORT:

ADD: + \$40 per Adult / + \$20 per Child

Airfare Start From:

SCOOT: \$450 A/C (NO LUGGAGE)

QF (O): \$485 A/ \$364 C

SQ (K): \$435 A/C

QF (Q): \$640 A/ \$480 C

SQ (V): \$645 A/C